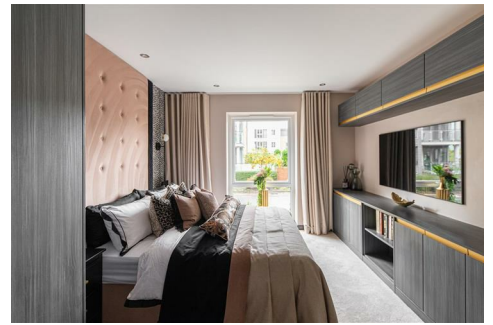




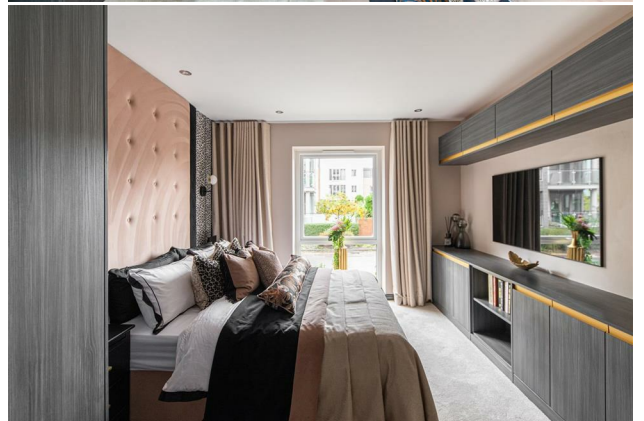
# HIVE ESTATES



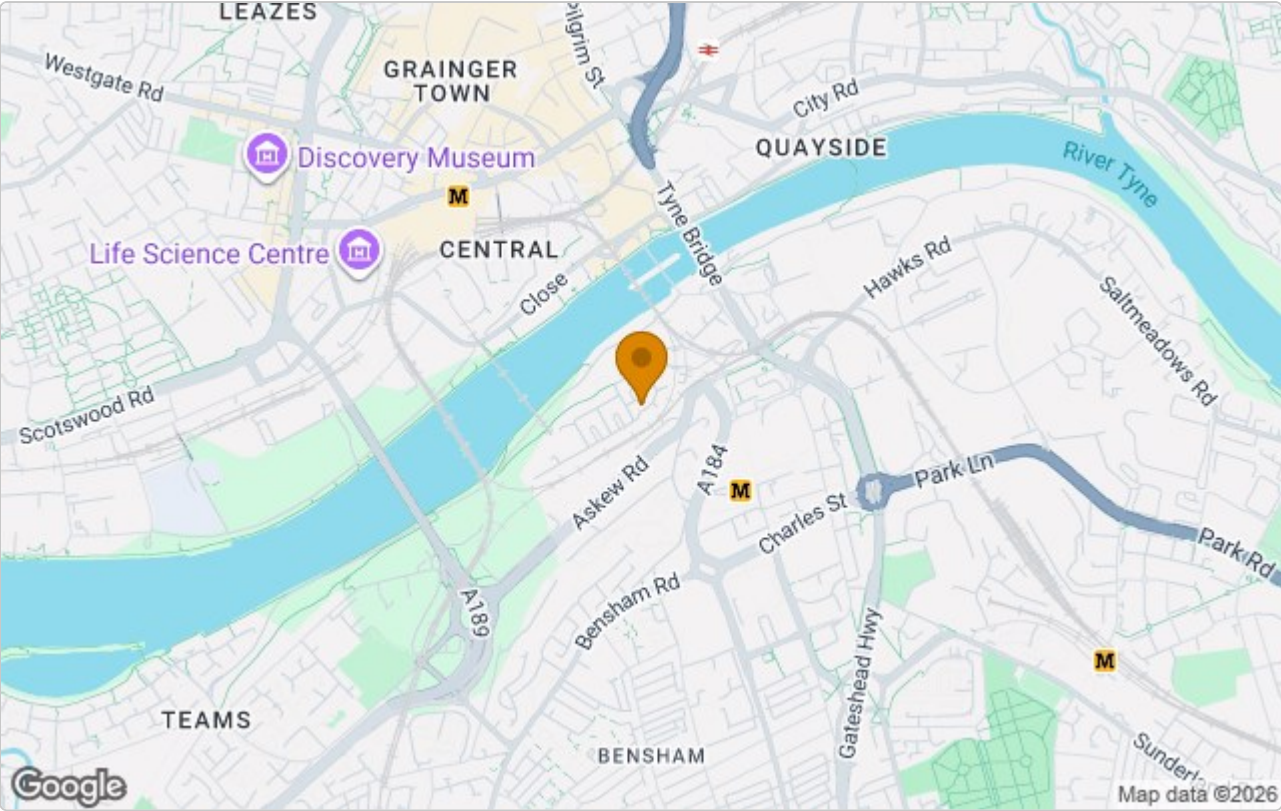
**1 Liscio Greensfield Close, Gateshead, NE8 2FS**

**£1,600 Per Month**

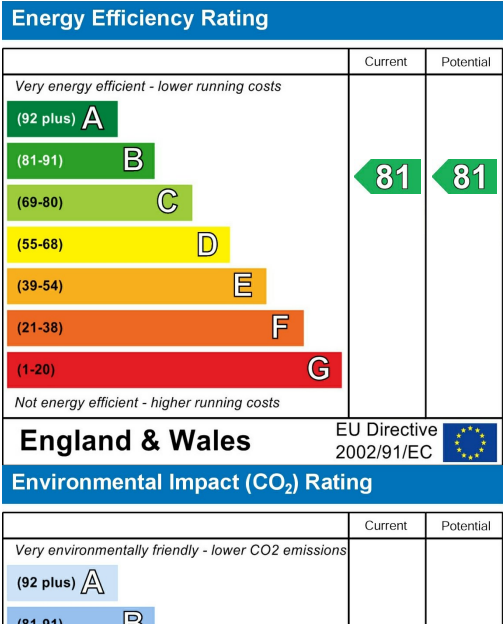
Available Now | £1,600 per month | Hive Estates presents to the market a stunning luxury apartment based in the popular area of Ochre Yards on the Gateshead Quayside. The apartment is based in the new development of Liscio, a secure apartment within a modern and vibrant area. The property has an open plan lounge and kitchen, creating a social space to relax or entertain in. The kitchen is brand new with built in appliances and has a breakfast bar area included. The lounge is cosy and comes furnished with corner sofa and TV unit. There are two double bedrooms with plush carpets and brand new furniture including double beds and fitted wardrobes. One of the bedrooms benefits from a stylish ensuite bathroom with beautiful metro tiling and double shower. The family bathroom comes with a bath. Externally there is parking and the property is within walking distance to Newcastle City Centre.



Area Map



Energy Efficiency Graph



These particulars, whilst believed to be accurate are set out as a general outline only for guidance and do not constitute any part of an offer or contract. Intending purchasers should not rely on them as statements of representation of fact, but must satisfy themselves by inspection or otherwise as to their accuracy. No person in this firms employment has the authority to make or give any representation or warranty in respect of the property.